

# OSCALE TURNOUTS™, INC.

*"Ready to Lay on your Right of Way™"*

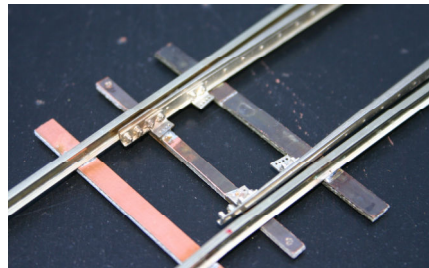
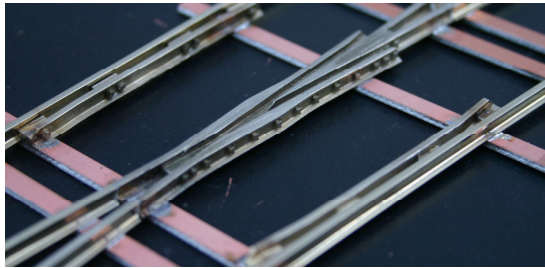
---

Updated: 6/15/17

OscaleTurnouts™, Inc., a Michigan Corporation, was formed to offer the O-scale 2-rail community (1/4 scale and P48), an engineered, high quality and prototypical looking turnout that will outperform any ready to run store bought turnout at an affordable price.

## Features:

- Designed to the NMRA, A.R.E.A. and 1921 Maintenance of Way Standards.
- Constructed using our own designed, precision milled fabrication jigs.
- **Right-O-Way™** cast frog, guard rails and points for a prototypical appearance.



- 11-PC ties resistance soldered to the rail to insure precise track gauge.
- Solid (non-hinged) Points.
- Staggered rail ends.
- Diverging stock and frog rails extended (#8, #10) for single cross-over application on 4" centerline.
- DC / DCC compatible.
- Insulated Frog.
- Point rails electrically connected to the stock rails.
- Prototypical tie spacing.
- Proudly manufactured in the United States by American Citizens.

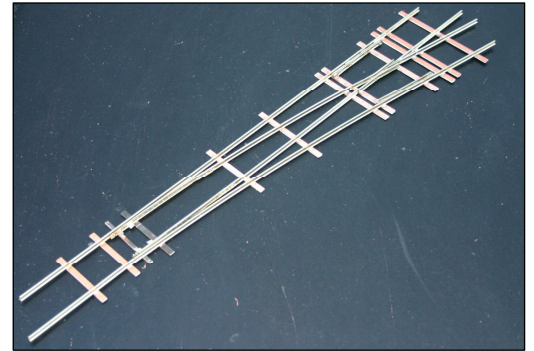
Updated: 6/15/17

## Turnout Configurations:

OscaleTurnouts™ offers three (3) turnout configurations:

### 1. Base (PC)

- 11 - PC ties resistance soldered to the Nickel Silver rail.
- Right-Of-Way cast frog, guard rails and points.
- Insulated frog
- DC / DCC compatible.
- Ready to lay on wood ties (ties not included)

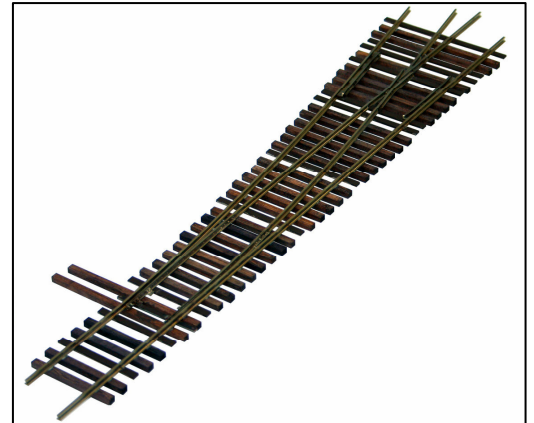


### 2. Ready to Lay™ (RL)

The Ready-to-Lay™ configuration is for the modeler who wants the closest thing to a store bought turnout.

The **Ready to Lay™ (RL)** turnout includes:

- Base (PC) turnout.
- Stained wood ties (water soluble) glued to the rail.
- Painted PC ties.
- Scale ties.
- Prototypical tie spacing.
- 18ga. feeder wire soldered to the frog (optional).



### 3. Detail Kit (SD)

This kit is designed for the modeler who wants to create a super detailed turnout. **Assembly required.**

The **Detail Kit (SD)** includes:

- Base (PC) turnout.
- Un-painted wood ties, pre cut to length.
- Tie plates (plastic).
- Bridge assembly (plastic).
- Rail braces (nickel silver).
- Joint Bars (plastic)

Updated: 6/15/17

## Product Line:

All turnouts are constructed using our own prototypical profiled nickel silver, non-weathered rail.

### • Current Offerings (as of 6/15/17)

#### ★ Code 100

- #6 Right – Bolted Frog.
- #6 Left – Bolted Frog.

#### ★ Code 125

- #6 Right – Bolted Frog.
- #6 Left – Bolted Frog.
- #6 Wye – Bolted Frog.
- #8 Right – Rail-bound Frog.
- #8 Left – Rail-bound Frog.

#### ★ Code 148

- #6 Right – Bolted Frog.
- #6 Left – Bolted Frog.
- #6 Wye – Bolted Frog
- #8 Right – Rail-bound Frog.
- #8 Left – Rail-bound Frog.
- #10 Right – Rail-bound Frog.
- #10 Left – Rail-bound Frog.
- 60"/84" Curved Left – Rail-bound Frog.
- 60"/84" Curved Right – Rail-bound Frog.
- #8 Crossing (7.15°) – Rail-bound Frogs.
- #8 Double Slip (7.15°) – Rail-bound Frogs.
- #8 Double Cross Over – Rail-bound Frogs

Updated: 6/15/17

★ **P48 Code 100**

- #6 Right – Bolted Frog.
- #6 Left – Bolted Frog.

★ **P48 Code 125**

- #8 Right – Rail-bound Frog.
- #8 Left – Rail-bound Frog.
- #10 Right – Rail-bound Frog.
- #10 Left – Rail-bound Frog.

● **Future**

- ★ #4 Wye – Rail-bound Frog, Code 148.
- ★ #6 Left/Right – Rail-bound Frog, Code 125.
- ★ #6 Left/Right – Rail-bound Frog, Code 148.
- ★ Double Slip (7.15°) – Rail-bound Frogs, Code 125
- ★ P48 #7 Left/Right – Rail-bound Frog, Code 125.

● **Custom Runs**

OscaleTurnouts™ welcomes all custom applications. Price and delivery will depend upon the complexity of the design and the quantities required.

**Price (Code 100):**

- **Base (PC)**
- **Ready to Lay™ (RL)**
- **Detail Kit (SD)**

#6
\$ 95.00
\$ 110.00
\$ 142.00

**Price (Code 125):**

- **Base (PC)**
- **Ready to Lay™ (RL)**
- **Detail Kit (SD)**

#6	#8
\$ 86.00	\$ 93.00
\$ 102.00	\$ 109.00
\$ 134.00	\$ 141.00

# OSCALETURNOUTS™, INC.

"Ready to Lay on your Right of Way™"

---

Updated: 6/15/17

## Price (Code 148):

- **Base (PC)**
- **Ready to Lay™ (RL)**
- **Detail Kit (SD)**

#6	#8	#10	60"84" Curved
\$ 86.00	\$ 93.00	\$ 95.00	\$99.00
\$ 102.00	\$ 109.00	\$ 110.00	\$120.00
\$ 134.00	\$ 141.00	\$ 143.00	\$147.00

- **Base (PC)**
- **Ready to Lay™ (RL)**

#8 Crossing	#8 DBL Slip	#8 DBL Cross Over
\$ 265.00	\$ 425.00	\$ 620.00
\$ 290.00	\$ 450.00	\$ 750.00

## P48 Price (Code 125):

- **Base (PC)**
- **Ready to Lay™ (RL)**
- **Detail Kit (SD)**

#6	#8	#10
\$95.00	\$ 99.00	\$ 102.00
\$110.00	\$ 115.00	\$ 117.00
\$142.00	\$ 147.00	\$ 149.00

Prices subject to change without prior notice.

U.S. Dollars.

F.O.B. Hamburg, Michigan.

## Terms:

- PayPal
- Credit Card
- Bank Cashiers Check
- Postal Money Order
- No C.O.D.

## Distribution Channels:

- Direct
- Ebay – under the name of "oscaleturnouts"

# OSCALE TURNOUTS™, INC.

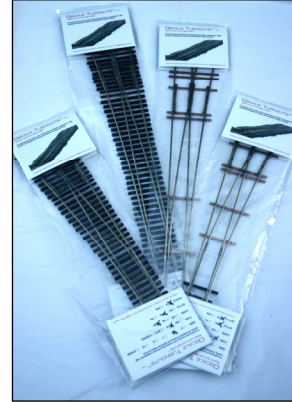
*"Ready to Lay on your Right of Way™"*

---

Updated: 6/15/17

## Shipping and Handling:

- All turnout are shipped insured via US Priority Mail within 3 days (subject to inventory) after receipt of payment.
- All turnout are packaged in plastic bags that are taped to a plywood board and then placed in a 28" x 6" x 6" cardboard box. Orders greater than 4 turnout will be packaged in multiple boxes.
- A handling fee is assessed on all orders. It includes the cost of "Insurance" and shipping supplies.



## Contact:

Oscale Turnouts, Inc.  
PO Box 818  
Hamburg, MI 48139  
810-231-4461  
info@oscaleturnouts.com

## Acknowledgements:

This project would not have been possible without the help of the following:

- Joe Giannovario (RIP), Publisher , O Scale Trains Magazine
- Louis Cross (RIP), Owner, Right-O-Way
- John Pautz, Owner, American Switch & Signal